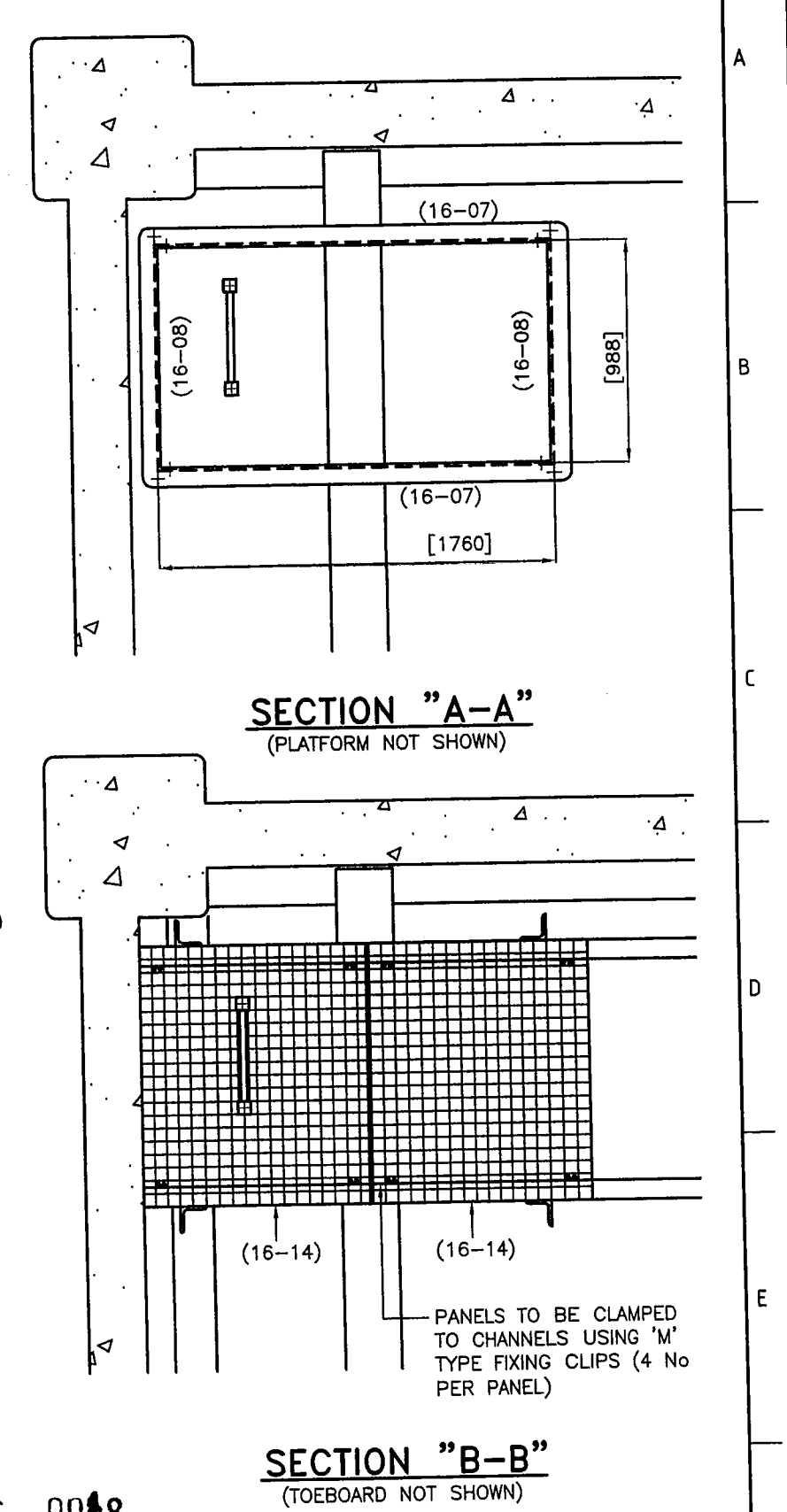
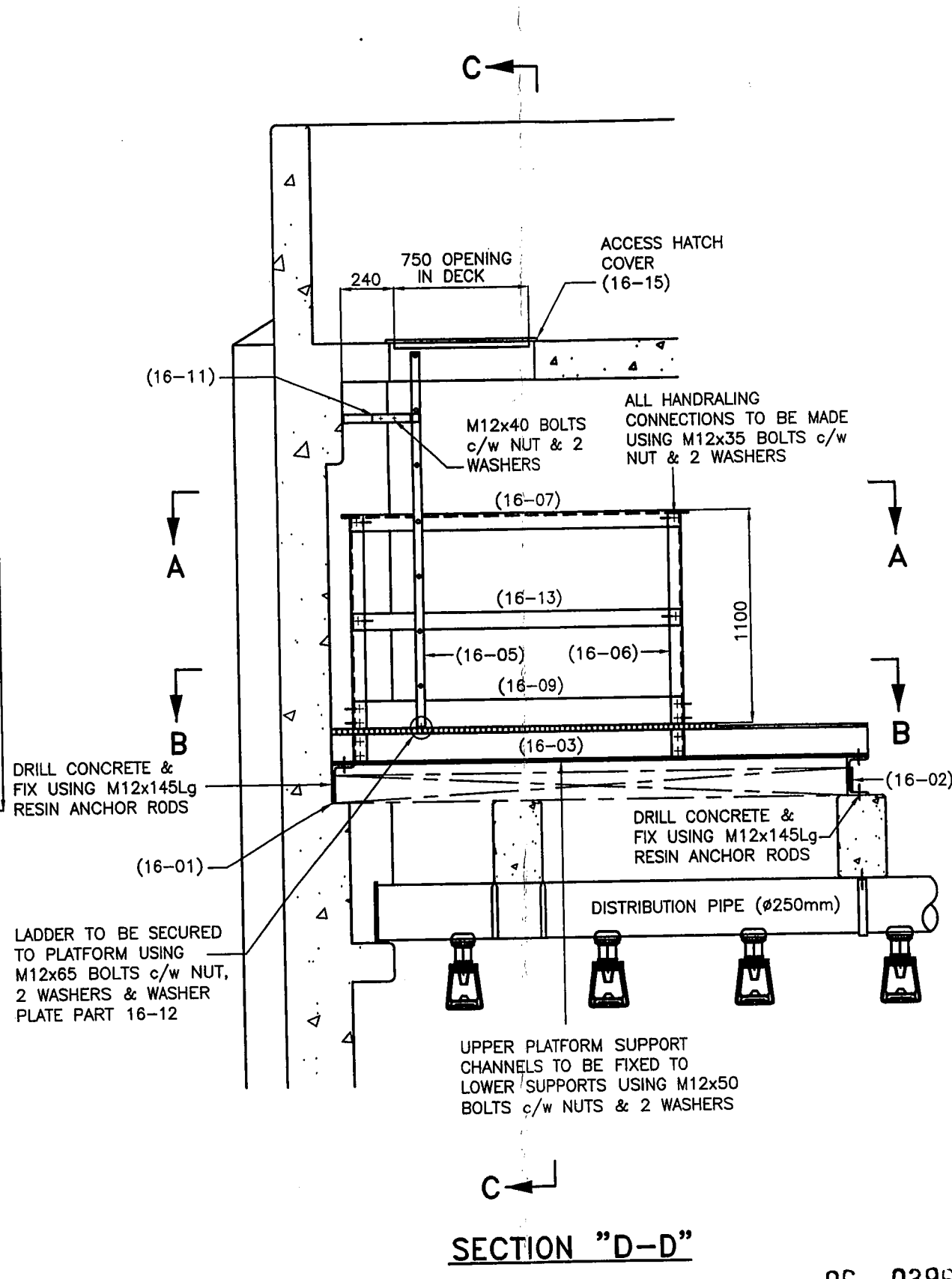
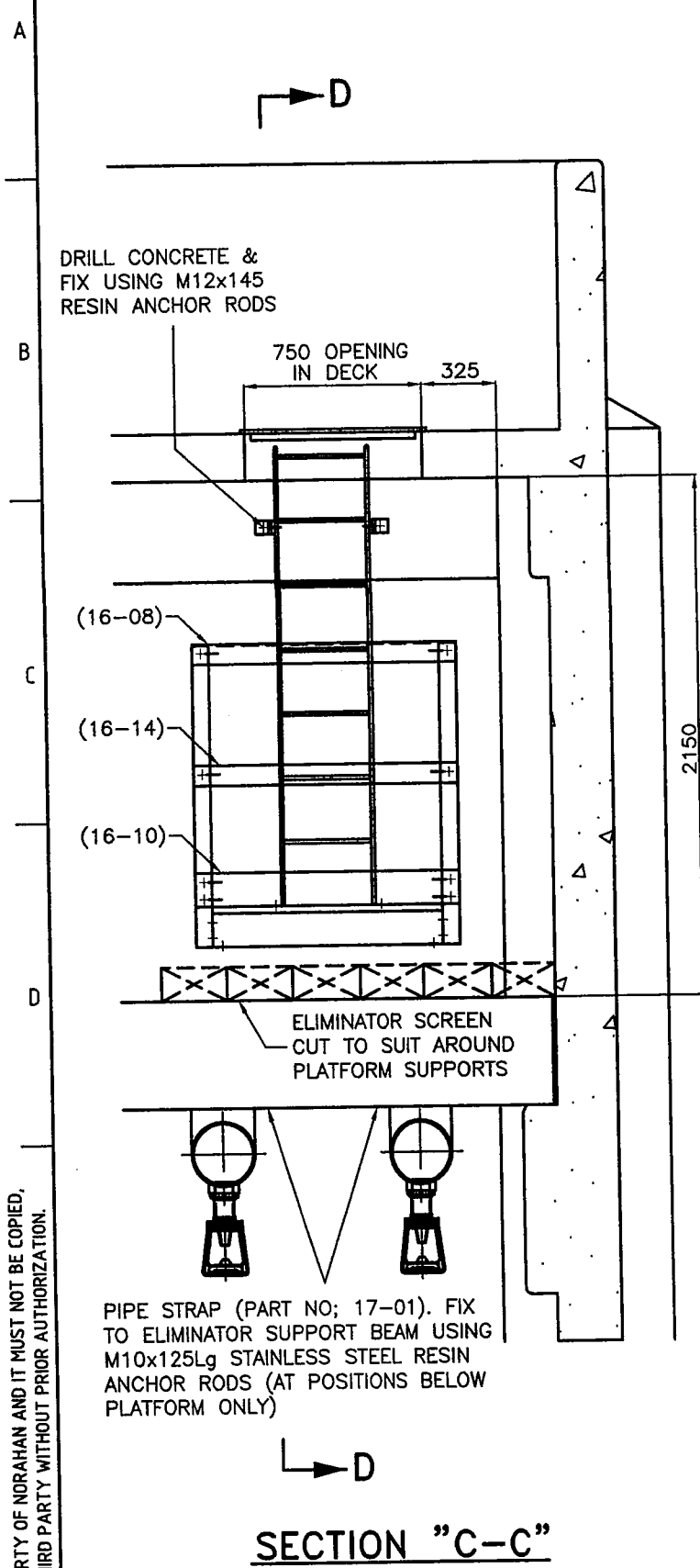
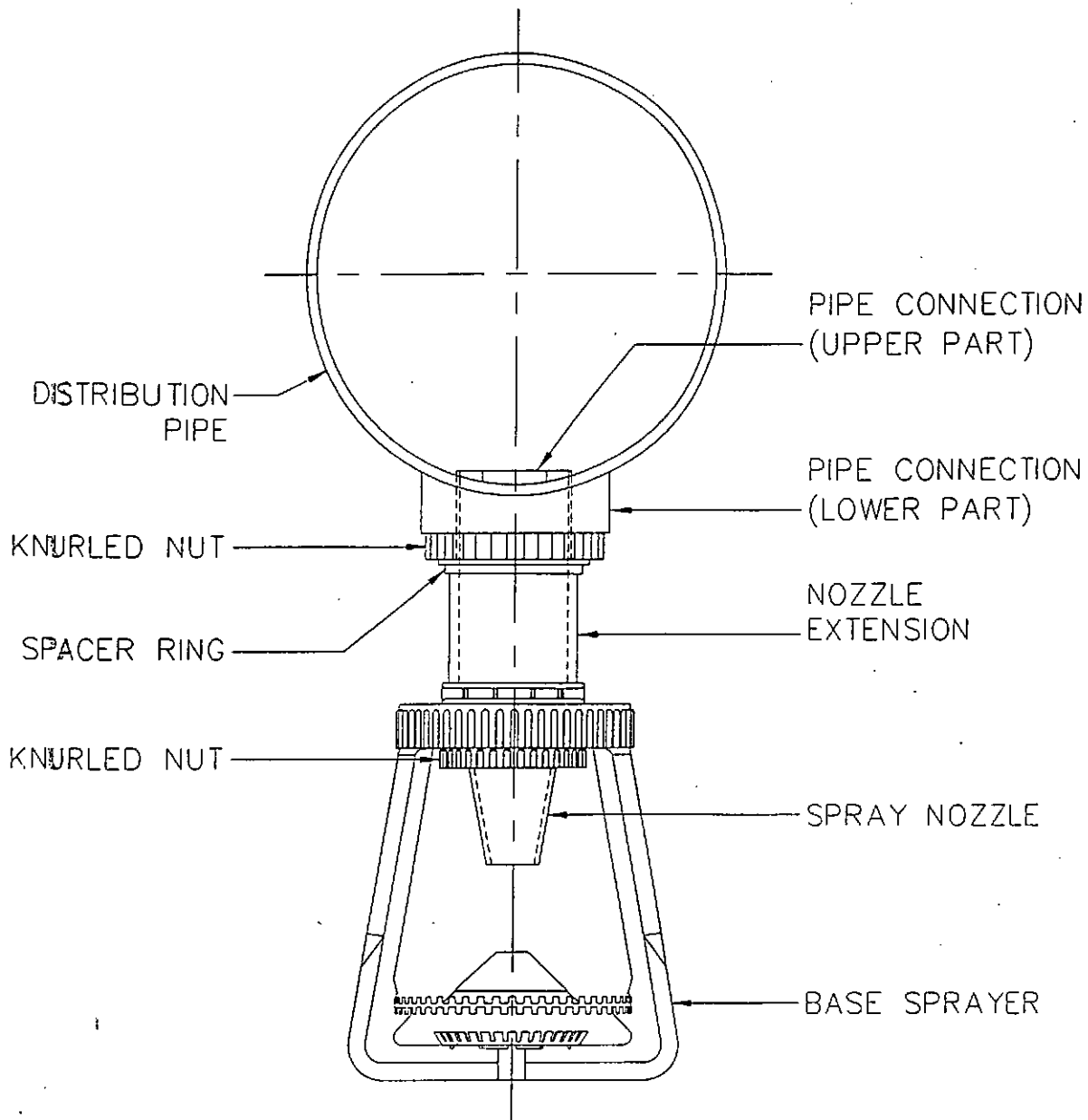


THIS DOCUMENT IS A PROPERTY OF NORAHAN AND IT MUST NOT BE COPIED, NOR TRANSFERRED TO A THIRD PARTY WITHOUT PRIOR AUTHORIZATION.



05 0396 0018

	C	DES.: MARLY	DATE: OCT. 2004	PROJECT: NICICO, SARCHESHMEH SULPHARIC ACID PLANT	SCALE: N.T.S.				
	B	DRAWN: M.BEHOUDI	DATE: OCT. 2004	TITLE: INTERNAL ACCESS PLATFORM	FORMAT: A3				
	A	CHKD: K.ETAATI	DATE: OCT. 2004						
	0	APP: A.ELHAGH	DATE: OCT. 2004						
	Rev. 0	FIRST ISSUE	MARLEY A.ELHAGH	OCT. 2004	FILE NO: SSACD000GBCM020-00-01-0		DRAWING NO: 338033-NORA-000-CV-DW-0020	REV. 0	SHEET: 1 OF: 1
ORIGIN DWG. NO: SSA-CD0-00-GB-CM-020-00	REV. 0	DESIGNATION	CHKD.	APP.	DATE	FILE NO: SSACD000GBCM020-00-01-0	DRAWING NO: 338033-NORA-000-CV-DW-0020	REV. 0	SHEET: 1 OF: 1




DRAWING NUMBER - 260019/3

06-0396-0078

REFER TO LIST SHEET PW2
FOR FULL DESCRIPTION OF
SPRAYER PARTS

338033-NORA-900-ME-DW-0003

				SCALE N.T.S.	SPRAYER ASSEMBLY DETAIL TYPE 84141-4.0-02 CONCRETE TOWER
				DATE 23.06.04	
				DRAWN NL	 SPX Cooling Technologies UK Ltd. Gregory's Bank, Worcester. WR3 8AB. United Kingdom. Tel. +44 (0)1905 720200 Fax. +44 (0)1905 720201
				CHECKED MM	
				APPROVED BG	
REV	DATE	REVISION DETAILS	BY	CHKD	DRAWING NUMBER 260019/3
					REV

48